

PRE-COURSE PACKAGE FOR PARTICIPANTS:

International Spring School on Sustainable Development 2014

30th March – 5th April 2014, Týnec nad Sázavou, Czech Republic

1. CONTENT AND PROGRAMME

Sustainable Development (SD) is a key concept that takes into consideration economic, social and environmental aspects of life in an integrated, holistic way. Due to the many globally relevant issues pertaining to humanity, it is also very high on the global agenda – e.g. the UN is currently preparing Sustainable Development Goals (SDGs) as part of the post-2015 development agenda.

The International Spring School on Sustainable Development 2014 aims to draw on the experience of international experts and provide participants with basic theoretical knowledge on SD, accompanied by practical case studies and examples from real life.

To create an inspiring and lively learning environment, the Spring School will feature plenty of student-centred games, exercises and interactive workshops with a real emphasis on learning while having fun. A one-day field trip is planned as part of the programme.

A key focus of the course will be on expanding current knowledge on SD in the European context based on student discussions with international experts, as well as development of important SD competences and skills, such as systemic and critical thinking, team work in interdisciplinary and multicultural groups, communication and presentation skills in English, etc.

For the course Overview Programme, see Appendix 1 on the last page of this document.

2. LECTURERS, FACILITATORS AND PARTICIPANTS

Presenting and facilitation at the Spring School will be undertaken by a group of 10 international experts (Germany, the Netherlands, Portugal, Romania, etc.) as well as Charles University Environment Center staff (the main course coordinators).

The Spring School will host 15 students from Czech universities outside Prague and 6 international students from 6 different European countries. The study backgrounds of the participants vary considerably and we really appreciate such diversity. A large part of the value of the programme will come from the different perspectives each of you as participants bring. Please be ready to actively participate in the sessions and activities, bringing your own ideas, questions and inputs. There will be plenty of opportunities for sharing all of these during the course.

3. LOGISTICS

3.1 MEETING POINT IN PRAGUE

We will all meet up on Sunday 30th March in Prague where we will have a bus waiting to take us to the course venue (Hotel Týnec - see Lodging and Meals below).

Where:

Hotel Krystal – in the lobby

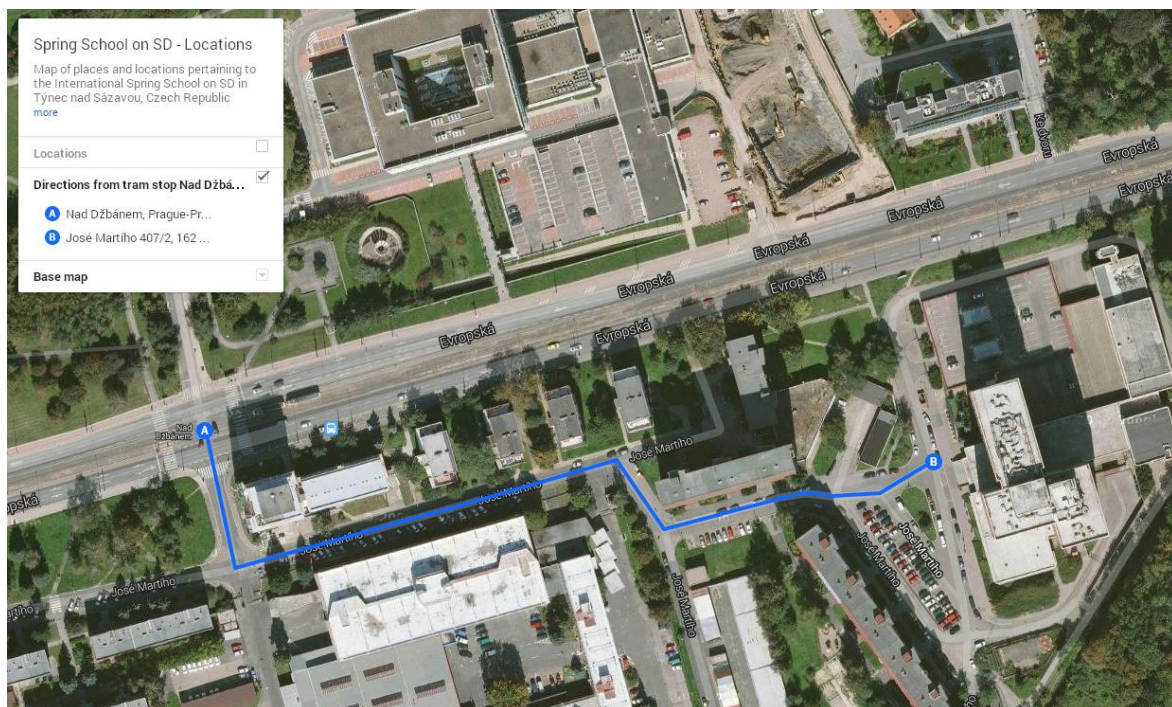
José Martího 407/2

162 00 Prague 6

See location on this [Google map](#)

The map below shows directions from the tram stop „Nad Džbánem“ (A) to Hotel Krystal (B) – trams number 2, 20 and 26 stop here. The walk takes about 5 minutes.

[Detailed travel directions on this link](#)



When:

Sunday 30th March, 16:00

You therefore only need to buy a ticket to/from Prague and get from your point of arrival (train station, airport, etc.) to the meeting point.

We will return to this meeting point by bus on Saturday 5th April around 11:00.

3.2 LATECOMERS

In case you miss the bus departure from Hotel Krystal around 16:30 on Sunday 30th March due to unexpected circumstances, you can get to the venue town – Týnec nad Sázavou – by bus or train from Prague on your own. The course venue is within walking distance from the Týnec n. Sázavou Railway Station – see this [Google map](#).

There is a direct train from Prague Main Railway Station (Praha hl. n.) to Týnec n. Sázavou, which takes about 1.5 hrs (departure 17:55, 19:55 and 20:55 in the direction of “Čerčany”). There are also some slightly faster connections, but you would have to change trains/buses.

You can check the times and details on this Journey planner in English:

<http://jizdnirady.idnes.cz/vlakyautobusy/spojeni/?lng=E>

Note: Prague Main Railway Station = Praha hl. n.

If you do come late, please contact Dana Kapitulčinová on the day of arrival on her mobile phone +420 606 043 302 so that we know about your expected arrival time.

4. LODGING AND MEALS

4.1 COURSE VENUE

We will stay in Hotel Týnec for the duration of the course. The hotel is located in a small town called Týnec nad Sázavou (5,000 inhabitants) on the Sázava River situated south-east of Prague.

Where:

Hotel Týnec

Klusáčkova 2

257 41 Týnec nad Sázavou

[Google map](#)

When:

Sunday 30th March (arrival ca 17:30) – Saturday 5th April (departure ca 10:00)

4.2 LODGINGS

You will be accommodated in Hotel Týnec in mostly triple- and possibly some quadruple-occupancy rooms with their own bathroom facilities.

Wi-fi will be available in the hotel. Major mobile phone networks are available in Týnec.

4.3 MEALS

Meals and drinks will be provided during the course, including breakfast, lunch, dinner and coffee breaks. We will start with dinner on Sunday 30th March and finish with breakfast on Saturday 5th April.

You will be served according to the dietary requirements that you indicated – i.e. vegan, vegetarian, special diet, no special requirements – we'll do our best in cooperation with the hotel staff to accommodate your dietary preferences.

5. PRACTICAL INFORMATION

5.1 SAFETY AND INSURANCE

Týnec nad Sázavou is a small town with no major security issues, but please take general care of yourself and your belongings when wandering around.

Ensuring you are covered by health and accident insurance is your own responsibility. We do not assume any responsibility for expenses incurred for health-related services, neither for yourself nor for third parties affected by your actions. We will send you an insurance waiver form in advance, which we will ask you to sign and bring along to the course.

For your own safety, please make sure your insurance is valid in the Czech Republic or purchase special travel health insurance and bring a copy of your insurance policy and emergency contact numbers with you.

5.2 SPENDING MONEY

All food, accommodation, course material and activities during the programme will be covered by us. We suggest that participants bring some Czech Koruna (CZK) to cover small personal expenses. The amount depends on your expected expenses (you can check this [overview of prices](#) and do an estimation for yourself). Some evenings will be free for you to wander around the town, so you might want to have some money for that.

There are some ATMs in the town if you need to access more funds.

5.3 WEATHER

The weather in the Czech Republic at the end of March/beginning of April can vary considerably. It can be around freezing point during the night and easily up to 20 degrees on a warm sunny day, with an average of around 10-15 degrees on most days. There can also be some rain showers.

5.4 WHAT TO BRING

- Appropriate clothing – e.g. warm clothing for cold days/evenings, lighter wear for warmer days (see Weather above)
- Comfortable clothing for outdoor activities and relaxation
- Raincoat
- Shoes with good ankle support suitable for walking (field trip walk will take ca 2.5 hrs)
- Small backpack
- Water bottle
- Personal medication
- Laptop (if available)

- Personal items (camera, books, etc.)
- For Cultural Night: some typical food/drinks/handicrafts/artifacts/etc. from your country/region that you could share with others (something small that you can bring)

6. CONTACTS AND LOCATIONS

The following link shows you the location of all relevant places and important points on a Google map:

https://mapsengine.google.com/map/edit?mid=zAE_bF4kNOw4.kjGRjhzhqGY

LOCATIONS:

**Hotel Krystal - Meeting point on Sunday 30th March, arrival point on Saturday 5th April
in the hotel lobby**

José Martího 407/2

162 00 Prague 6

Hotel Týnec - Spring School venue (we'll get there by bus from Hotel Krystal)

Klusáčkova 2

257 41 Týnec nad Sázavou

CONTACTS:

Dana Kapitulčinová

Coordinator/Researcher – Main Course Coordinator

+420 220 199 483 (office)

+420 606 043 302 (mobile)

Dana.Kapitulcinova@czp.cuni.cz

Jiří Dlouhý (only in case you cannot reach Dana)

Project Manager – Head of Environmental Education Unit

+420 220 199 461 (office)

+420 724 698 016 (mobile)

Jiri.Dlouhy@czp.cuni.cz

7. REQUIREMENTS FOR CERTIFICATION

The International Spring School on SD offers participants 2 ECTS credit points for successful completion of the programme. The accreditation of these credits at your home institution is the responsibility of each participant. Participants who successfully complete the programme will also be awarded a certificate.

To receive the certificate and the ECTS points it is necessary to fulfil the following requirements:

1. Attendance at all mandatory course events
2. Completion of the pre-assignment (will be sent 2 weeks in advance of the course)
3. Active participation in group work in the second half of the week
4. Completed and signed insurance waiver form (will be sent in advance)

8. RETURNABLE DEPOSIT

All selected participants have been asked to pay a fully refundable deposit of 1000 CZK to secure their place on the course. This deposit will be paid back directly to your bank account upon successful completion of the course.

We require this deposit simply to ensure that selected participants will actually come to the course as last minute cancellations are rather problematic for us as organisers.

If, however, you have to cancel your participation after paying the deposit due to serious reasons (illness, family issues, etc.), we will of course accept this and your deposit will be returned to you.

(Note: Not relevant for EVS students.)

Appendix 1. International Spring School on Sustainable Development – OVERVIEW PROGRAMME

	SUNDAY 30th March	MONDAY 31st March	TUESDAY 1st April	WEDNESDAY 2nd April	THURSDAY 3rd April	FRIDAY 4th April	SATURDAY 5th April
morning		Welcome Sustainable Development E-learning	Energy Waste	Decoupling Tourism	Hydropower Plant Excursion - Štěchovice	Student Group work	10:00 Departure back to Prague
afternoon	16:00 Meet up in Hotel Krystal, Prague 16:30 departure to Týnec n. S.	Students: Group Activity Staff: Annual Meeting	Climate Change and Adaptation Nature Conservation	Food systems Water	Walk along the Vltava River: Rivers and SD Student Group work in Týnec	Group work outcomes Certificates of Completion	
evening	Introduction evening (games, discussions)	tbc	Cultural Night	Introduction to Fieldtrip and Group work	tbc	Farewell Party	

tbc = to be confirmed

Changes in the programme are possible. A more detailed programme with times will be provided on each day of the Spring School.